

LT-3 EcoScope Log RT 1:500 MD

Format: IMP_ANISO

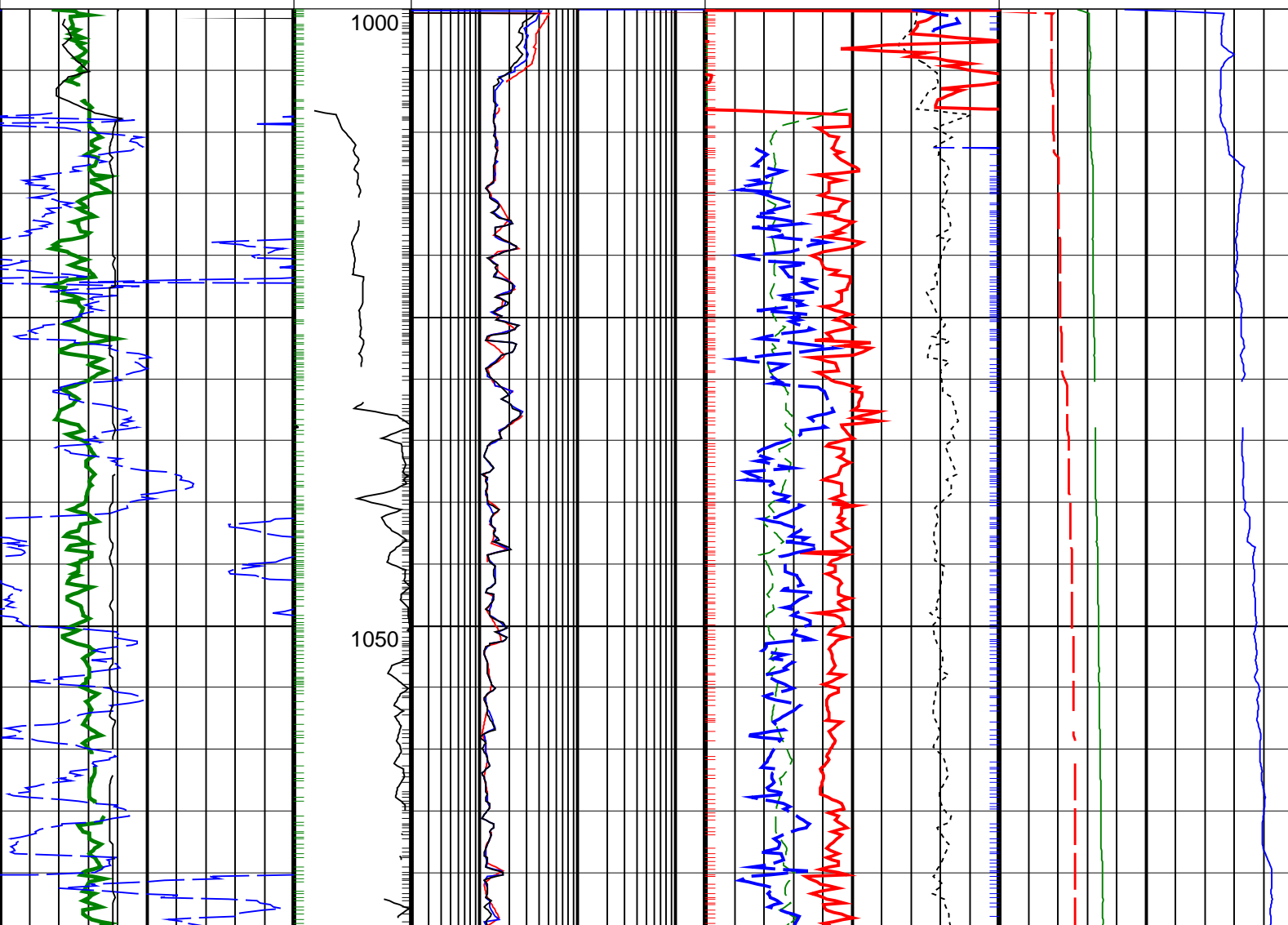
Vertical Scale: 1:500

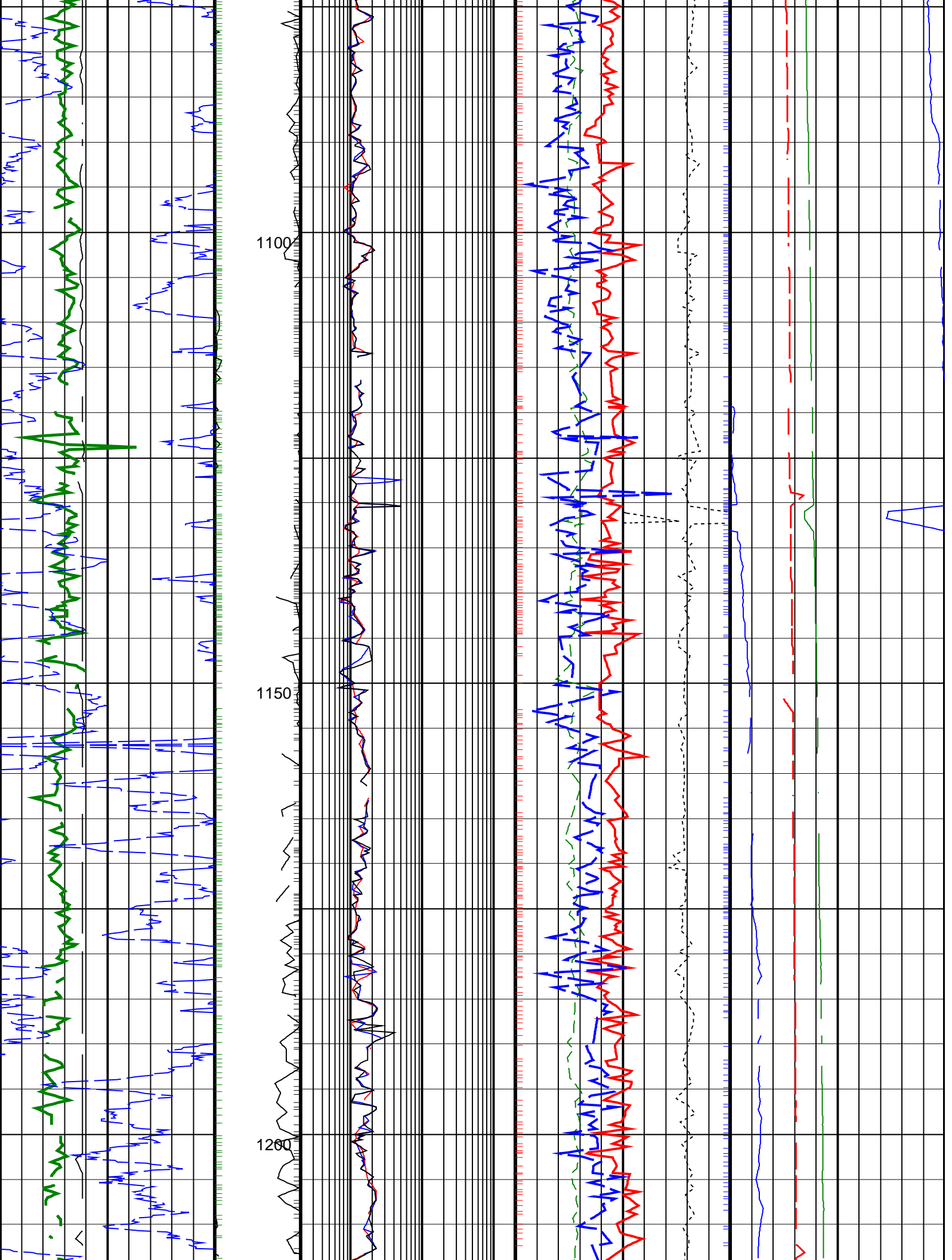
Graphics File Created: 20-Jul-2006 01:45

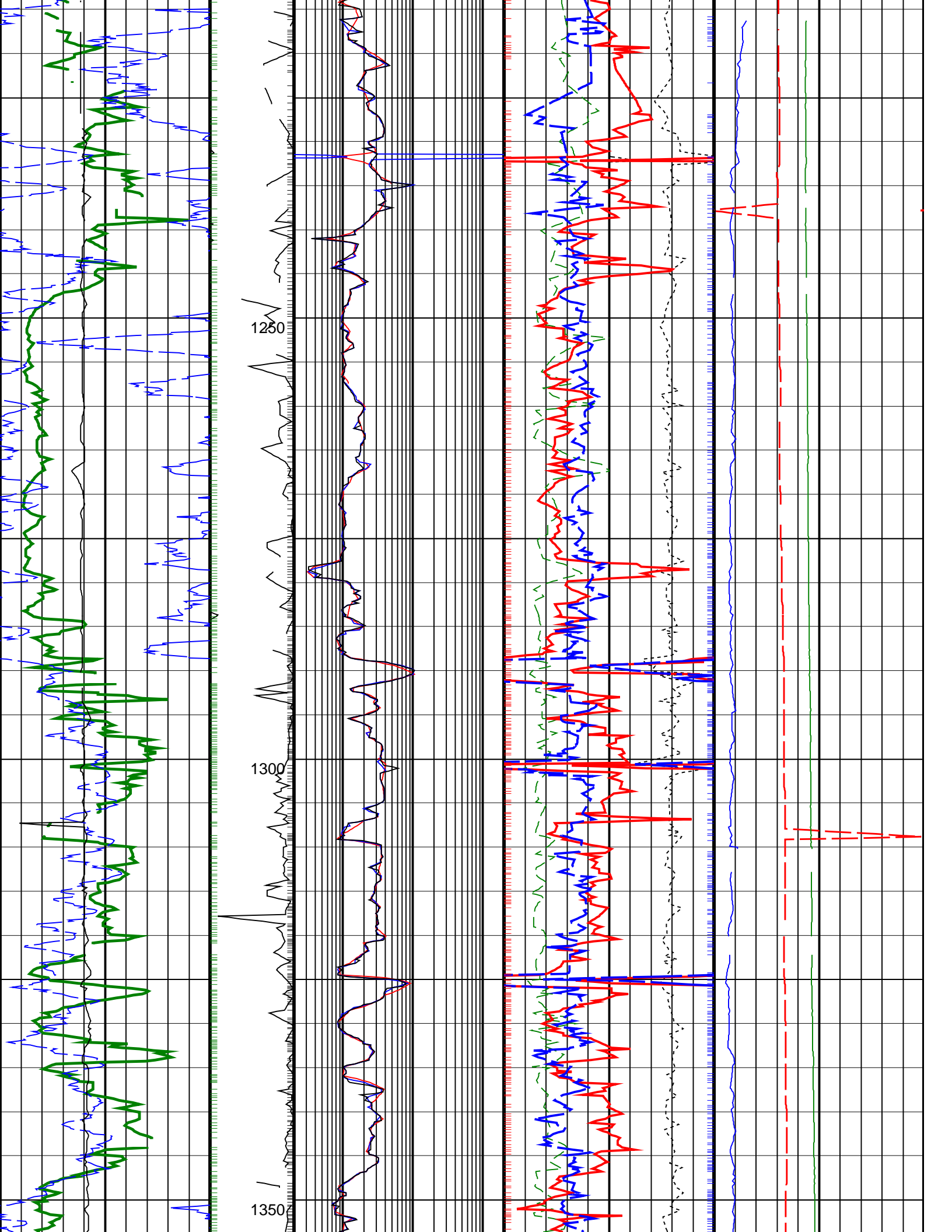
PIP SUMMARY

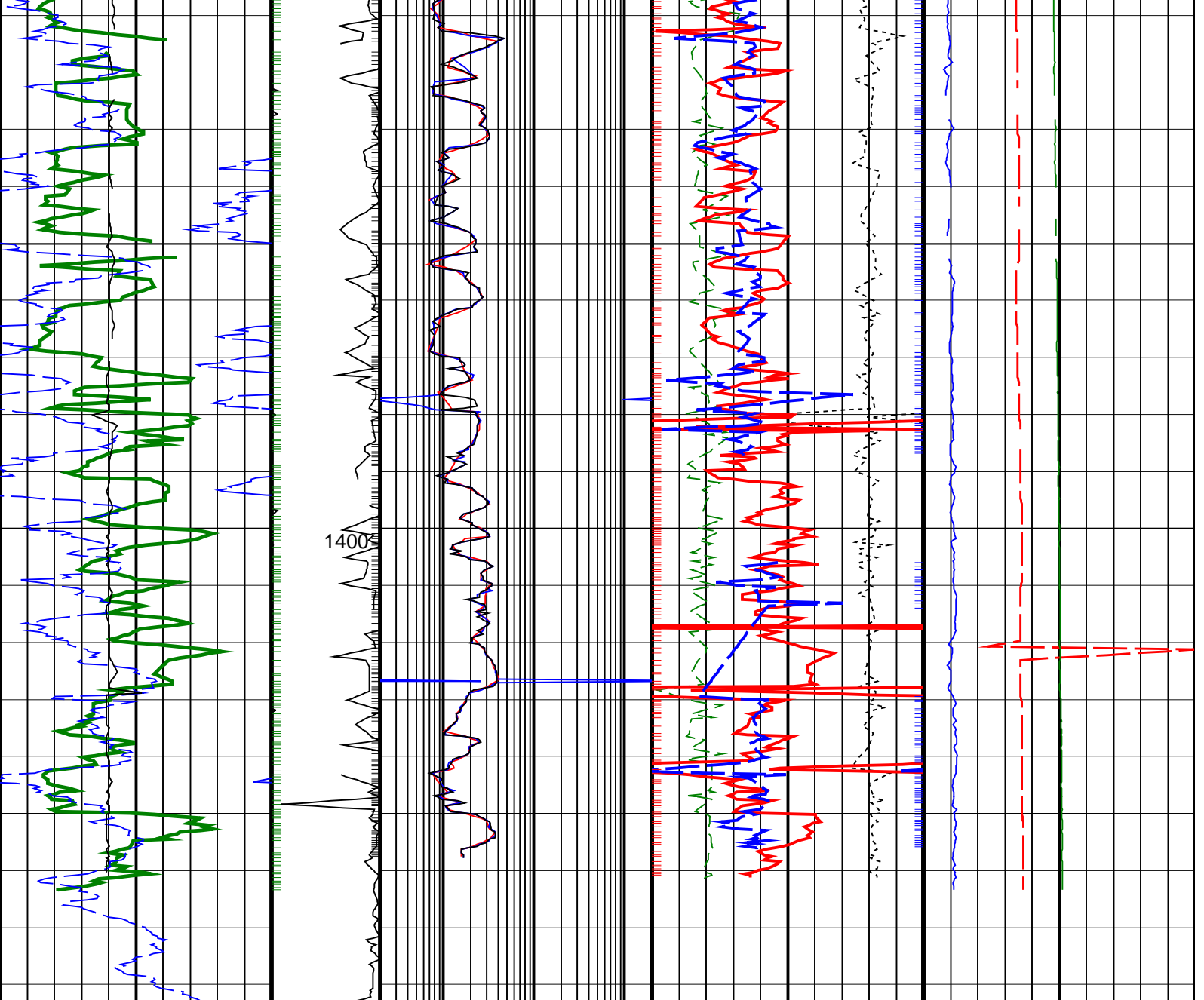
Density Samples +
 Gamma Ray Samples
 Resistivity Samples
 Neutron Samples +

Gamma Ray, Average, Real-Time, Computed Downhole (GRMA_DH_ECO_RT) 0 (GAPI) 200		Eco Uncorrected Phase Shift Resistivity 40 inch at 2MHz, Real-Time (P40H_UNC_DH_ECO_RT) 0.2 (OHMM) 200	Thermal Neutron Porosity, Average, Real-Time (TNPH_ECO_RT) 45 (PU) -158	Equivalent Circulating Density, Real-Time (ECD_ECO_RT) 13 (LB/G)
Ultrasonic Caliper, Average Diameter, Real-Time, Computed Downhole (UCAV_DH_ECO_RT) 6 (IN) 16		Eco Uncorrected Phase Shift Resistivity 28 inch at 2MHz, Real-Time (P28H_UNC_DH_ECO_RT) 0.2 (OHMM) 200	Photoelectric Factor, Bottom, Real-Time, Computed Downhole (PEB_DH_ECO_RT) 0 (----) 10 Bulk Density Correction, Bottom, Real-Time Computed Downhole (DRHB_DH_ECO_RT) (G/C3) -0.25 0.25	Downhole Annulus Pressure, Real Time, Computed Downhole (DHAP_DH_ECO_RT) 0 (PSI) 6000
ROP*5 (ROP5) 100 (M/HR) 0	MWD Collar RPM (CRPM_RT) (RPM) 0 200	Eco Uncorrected Phase Shift Resistivity 16 inch at 2MHz, Real-Time (P16H_UNC_DH_ECO_RT) 0.2 (OHMM) 200	Bulk Density, Bottom, Real-Time, Computed Downhole (ROBB_DH_ECO_RT) 1.95 (G/C3) 2.95	Downhole Annulus Temperature, Real Time, Computed Downhole (DHAT_DH_ECO_RT) 0 (DEGC) 200









ROP*5 (ROP5) (M/HR)	WMD Collar RPM (CRPM_RT) (RPM)	Eco Uncorrected Phase Shift Resistivity 16 inch at 2MHz, Real-Time (P16H_UNC_DH_ECO_RT) (OHMM)	Bulk Density, Bottom, Real-Time, Computed Downhole (ROBB_DH_ECO_RT) (G/C3)	Downhole Annulus Temperature, Real Time, Computed Downhole (DHAT_DH_ECO_RT) (DEGC)
100 ——— 0	0 ——— 200	0.2 ——— 200	1.95 ——— 2.95	0 ——— 200
Ultrasonic Caliper, Average Diameter, Real-Time, Computed Downhole (UCAV_DH_ECO_RT) (IN)	Eco Uncorrected Phase Shift Resistivity 28 inch at 2MHz, Real-Time (P28H_UNC_DH_ECO_RT) (OHMM)	Photoelectric Factor, Bottom, Real-Time, Computed Downhole (PEB_DH_ECO_RT) (G/C3)	Bulk Density Correction, Bottom, Real-Time Computed Downhole (DRHB_DH_ECO_RT) (G/C3)	Downhole Annulus Pressure, Real Time, Computed Downhole (DHAP_DH_ECO_RT) (PSI)
6 ——— 16	0.2 ——— 200	0 ——— 10	-0.25 ——— 0.25	0 ——— 6000
Gamma Ray, Average, Real-Time, Computed Downhole (GRMA_DH_ECO_RT) (GAPI)	Eco Uncorrected Phase Shift Resistivity 40 inch at 2MHz, Real-Time (P40H_UNC_DH_ECO_RT) (OHMM)	Thermal Neutron Porosity, Average, Real-Time (TNPH_ECO_RT) (PU)	Equivalent Circulating Density, Real-Time (ECD_ECO_RT) (LB/G)	
0 ——— 200	0.2 ——— 200	45 ——— 15	8 ——— 13	

PIP SUMMARY

Density Samples

Gamma Ray Samples
Resistivity Samples

IDEAL Version: ID11_0C_01

IDEAL